



PERRIN
CONFERENCES

ARTIFICIAL STONE SILICOSIS LITIGATION CONFERENCE



JW Marriott Los Angeles | April 28, 2026

STATUS OF THE ARTIFICIAL STONE LITIGATION IN CALIFORNIA



Geoff Davis, Esq.
CMBG3
Pasadena, CA



Camille Hunt, Esq.
Waters Kraus Paul & Siegel
Los Angeles, CA



James Nevin, Esq.
Brayton Purcell LLP
San Francisco, CA



Jana M. Simmons, Esq.
Ropers Majeski
Los Angeles, CA

Legislative Update



Complex Regulatory Landscape

Regulations arise from federal, state, and international levels addressing the silica exposure health crisis.

Health and Safety Enforcement

Efforts focus on enforcing standards to protect workers from respirable crystalline silica hazards.

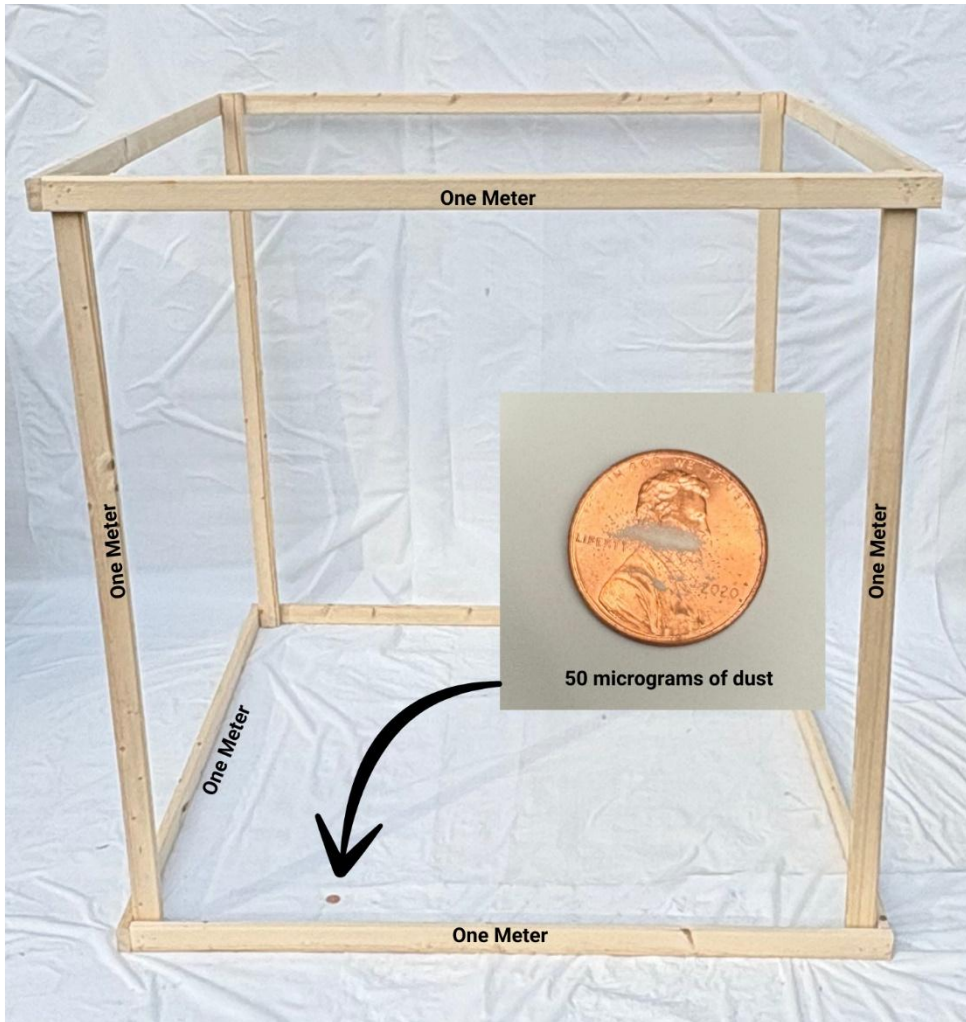
Balancing Interests

Regulatory frameworks balance public health imperatives with industry and economic considerations.

Policy Debate

Discussion continues on eliminating hazards versus managing risks through controls and enforcement.

OSHA 2016 Respirable Crystalline Silica Standard PEL



Regulatory Limits and Scope

OSHA set a PEL of $50 \mu\text{g}/\text{m}^3$ and an action level of $25 \mu\text{g}/\text{m}^3$ for respirable crystalline silica across multiple industries.

Compliance Requirements

The standard recommends engineering controls, respirators, air monitoring, and medical surveillance to protect workers from silica exposure.

Limitations of the Standard

The rule does not establish a safe exposure level nor address specific risks in artificial stone fabrication.

Dec. 2023 Cal/OSHA Emergency Temporary Standard (ETS)



Targeted High-Exposure Tasks

The ETS focuses on cutting, grinding, polishing, and cleanup to reduce silica dust exposure in artificial stone fabrication.

Stop-Work Orders and Wet Methods

Immediate stop-work orders are authorized for dry operations, mandating continuous use of wet methods to limit dust.

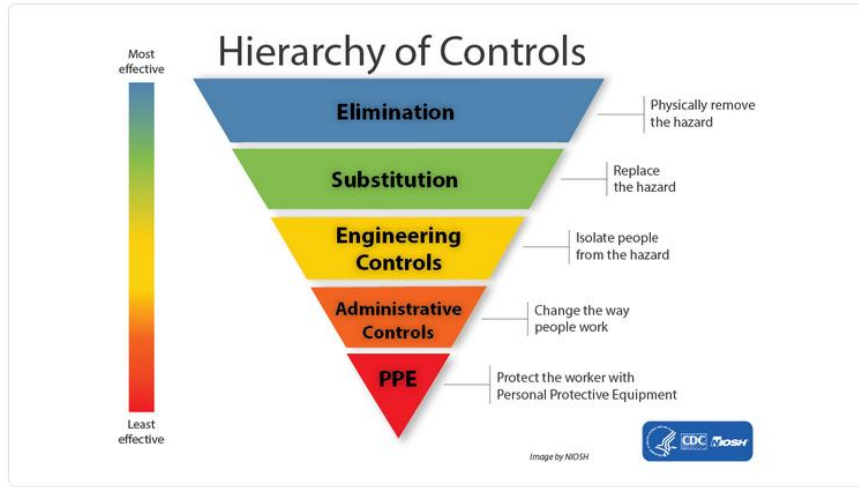
Annual Air Monitoring

The ETS requires annual air monitoring to ensure silica dust levels remain within safe limits for worker health.

Safety Equipment and Compliance

HEPA filters and powered air-purifying respirators (PAPR) are key safety measures to comply with the ETS standards.

Australia's Ban on Artificial (Engineered) Stone



Nationwide Regulatory Ban

Australia enacted a nationwide ban on engineered stone covering manufacture, supply, processing, and installation starting July 2024.

Importation Prohibition

Importation of engineered stone containing crystalline silica will be banned across Australia from January 2025.

Health and Safety Impact

The ban aims to protect worker health by eliminating hazardous silica dust exposure from artificial stone products.

Global Regulatory Precedent

Australia's comprehensive ban sets an international example for eliminating hazardous products to safeguard health worldwide.

California SB 20 - Silicosis Training, Outreach, and Prevention (STOP) Act - Jan 2026



Scope of SB 20 Regulations

SB 20 bans dry cutting, grinding, polishing, and cleanup on artificial stone to reduce silica exposure risks.

Mandatory Training and Enforcement

The law mandates workforce training by mid-2026 and grants Cal/OSHA immediate stop-work enforcement authority.

Challenges in Implementation

Lack of funding raises concerns about enforcement effectiveness and practical impact of the regulation.

Health and Safety Goals

SB 20 aims to reduce silicosis by addressing hazardous fabrication practices through regulation and compliance.

STOP Act (SB 20)

- California law addressing silica exposure from artificial stone
- Signed **October 13, 2025**
- Effective **January 2026**
- Focuses on protecting workers performing high-exposure tasks

What SB 20 Does

- Prohibits dry cutting and other dry methods
- Requires wet methods for high-exposure tasks
- Targets tasks like cutting, grinding, polishing, drilling, and cleanup
- Strengthens silica safety requirements in fabrication shops

SB 20 Enforcement / Compliance

- Strengthens training, reporting, and enforcement
- Requires employer attestations that workers were trained
- Treats silica-related violations more seriously
- Increases coordination between Cal/OSHA and public health agencies

WOEMA Petition to Cal/OSHA – May 2026 Standard Board Hearing - Vote



WOEMA's Regulatory Petition

WOEMA petitioned Cal/OSHA to revise regulations, advocating prohibition of fabrication and installation of hazardous engineered stone.

Health Hazards of Crystalline Silica

Engineered stone with over 1% crystalline silica poses serious health risks including silicosis among workers because it is uniquely toxic.

Alternatives and Job Security

The petition promotes replacing hazardous engineered stone with recycled glass and natural stone without job losses.

Supporting Evidence and Urgency

Public hearing documents and medical research strengthen the petition's call for urgent regulatory changes.

WOEMA Petition 609

- Seeks to revise 8 CCR § 5204
- Would prohibit fabrication and installation of engineered stone with more than 1% crystalline silica
- Goes beyond regulation by pushing for an effective ban on the highest-risk material

ISFA Proposal: Licensing and Certification



Industry-led Certification

ISFA proposes a licensing system led by the industry to ensure fabrication shops meet safety standards and improve compliance.

Phased Program Rollout

The certification program will be introduced in phases, ending with a public registry of certified fabricators for transparency.

Linking Safety to Material Access

Access to engineered stone slabs will be tied to verified safety compliance, reinforcing enforcement without banning materials.

Enforcement and Job Preservation

The approach balances strengthened enforcement with preserving jobs and consumer choice in the fabrication industry.



California Proposed AB 2137

Legislative Background

AB 2137 adopts ISFA's proposal and expands SB 20 to license and certify fabrication shops.

Certification Requirements

Ca/OSHA must establish a certification program by January 2028 with mandatory certification for shops.

Safety and Industry Impact

AB 2137 enforces stricter safety standards aiming to protect workers and sustain industry viability.

H.R. 5437: Protection of Lawful Commerce in Stone Slab Products Act

Bill Purpose and Scope

H.R. 5437 aims to give immunity to stone slab product manufacturers from civil lawsuits.

Legal Immunity and Preemption

The bill grants broad immunity to mostly foreign manufacturers and preempts state tort laws affecting liability.

Committee Hearing and Debate

The January 2026 hearing highlights debates on occupational disease, product liability, and federal regulatory limits.

Impact on Accountability

The bill raises concerns about fairness, predictability, and limits of regulatory and legal remedies for worker protection.



Legislative Conclusion: Eliminate the Hazard or Manage Risk?

Hazard Elimination vs Risk Management

The core debate is whether to completely eliminate hazards or manage risks through regulation and compliance.

Regulatory Challenges

Industries often resist hazard elimination until undeniable human costs force regulatory action and policy change.

Preventive Public Health Approaches

Proactive prevention, such as product substitution and safety enforcement, is key to protecting workers from occupational diseases.

Impact on Worker Safety

The decision will affect whether future workers are safeguarded or continue to face occupational health risks like silicosis.

The infographic is split into two vertical panels. The left panel has a red background and is titled 'ELIMINATE HAZARD'. It features a photograph of a worker in a white protective suit and mask, with a large red 'X' overlaid on the image. Below the photo is a list of three bullet points: 'Remove the Danger', 'Eliminate the Source', and 'Permanent Solution'. The right panel has a blue background and is titled 'MANAGE RISK'. It features a photograph of a worker in a yellow hard hat and safety vest using a power tool, with sparks flying. Below the photo is a list of three bullet points: 'Control Exposure', 'Use PPE & Safeguards', and 'Mitigate the Risk'. At the bottom center, the text 'Eliminate Hazard vs. Manage Risk' is displayed, with 'vs.' inside a white circle.

ELIMINATE HAZARD

- Remove the Danger
- Eliminate the Source
- Permanent Solution

MANAGE RISK

- Control Exposure
- Use PPE & Safeguards
- Mitigate the Risk

Eliminate Hazard vs. Manage Risk

Who Are the Defendants?



- Everyone in the stream of commerce that is not immune from suit:
 - Major U.S. Brands
 - International Manufacturers
 - Wholesale Distributors
 - Big Box Stores
 - Local/Regional Slab Retailers
 - Pre-fab Retailers
 - Interior Designers

Major U.S. Brands



- Manufacturers or distributors of the major brands names in artificial stone
- Sell slabs, and in some cases, pre-fabricated countertops
- Sell through big box stores, large and small retailers, fabrication shops, designers, etc.
- Several such defendants are in virtually all of the silicosis cases

International Manufacturers



- Many/most of the manufacturers of artificial quartz are Located outside the United States
- Plaintiffs have been working to bring in the international defendants
- Caesarstone, LTD was reportedly served in over 300 cases; motions to quash service have so far been denied and Caesarstone, LTD is seeking writ relief



caesarstone



Court of Appeal, Second Appellate District, Division Five - No. B352374

S295830

IN THE SUPREME COURT OF CALIFORNIA

En Banc

SUPREME COURT
FILED

CAESARSTONE LTD., Petitioner,

APR 15 2026

v.

Jorge Navarrete Clerk

SUPERIOR COURT OF LOS ANGELES COUNTY, Respondent;

Deputy

GERARDO RAMIREZ-SORIANO et al., Real Parties in Interest.

The petition for review and application for stay are denied.

The petition for review and application for stay are denied.

GUERRERO

Chief Justice



Wholesale Distributors



- Sell/sold inventory of brand-name and other natural and artificial stone materials to chains and local retailers
- Little or no involvement in retail sales or communication with contractors/fabricators/installers

Big Box Stores



- Home Depot, Lowes, Ikea
- Claims relate to services offered, including materials, design and installation
- Summary Judgment motions were granted in the Gonzalez-Morin case based on the big box stores' relationship to the stream of commerce
 - The stores never owned or possessed the slabs
 - The stores did not have authority or control over fabrication processes or safety at the fabrication shops

Slab Retailers



- Sell/sold brand-name and generic slabs
- Some sell natural stone, recycled glass and other materials in addition to quartz
- Typical customers include fabrication shops, contractors, and smaller retailers
- Some sell to homeowners
- Range of company sizes

Pre-Fab Retailers



- Typically sell stock kitchen cabinets, bathroom vanities and pre-fabricated countertops to go with them
- Some sell pre-fabricated natural stone countertops in addition to quartz
- Pre-fabricated to avoid labor costs involved with fabrication
- Pre-fabricated countertops may need to be cut to size, or holes cut for sink/stovetop
- Typical customers are small contractors and homeowners

Interior Designers



- Provide a range of services from design to materials and installation
- Often assist clients with material selection¹
- Typically provide design and material requirements to a fabricator, which then obtains the materials and performs the fabrication and installation
- Usually small businesses

Other Defendants



- PPE Manufacturers
- Manufacturers of tools and equipment



TELEPHONE (562) 437-4499
TOLL-FREE (877) TOX-TORT
TELECOPIER (562) 436-1561
WWW.TOXICTORTS.COM

1 METZGER LAW GROUP, APLC
2 RAPHAEL METZGER, ESQ., SBN 116020
3 rmetzger@toxictorts.com
4 SCOTT P. BRUST, ESQ., SBN 215951
5 sbrust@toxictorts.com
6 555 E. OCEAN BLVD., SUITE 800
7 LONG BEACH, CA 90802
8 Phone (562) 437-4499; Fax (562) 436-1561

9 BRAYTON ♦ PURCELL LLP
ALAN R. BRAYTON, ESQ., SBN 73685
JAMES P. NEVIN, ESQ., SBN 220816
For Service of Pleadings: mail@braytonlaw.com
For Other Communications: jnevin@braytonlaw.com
222 RUSH LANDING RD.
NOVATO, CA 94945-2469
Phone (415) 898-1555; Fax (415) 898-1247

PLAINTIFFS' NOTICE OF MOTION AND **MOTION TO CONSOLIDATE** FOR TRIALS ALL CASES OF PLAINTIFFS WHO WORKED SIMULTANEOUSLY IN THE SAME WORKPLACES

PRACTICE CONCENTRATED IN TOXIC
TORT & ENVIRONMENTAL LITIGATION
OCCUPATIONAL & ENVIRONMENTAL LUNG
DISEASE, CANCER, AND TOXIC INJURIES

20 vs.
21 ADB GLOBAL TRADE LLC, an Illinois
22 limited liability company, doing business
23 as Classic Stone LLC, et al.,

Defendants.

24 COORDINATION PROCEEDING
25 SPECIAL TITLE (RULE 3.550)

26 SILICOSIS CASES
27
28

**PLAINTIFFS' NOTICE OF MOTION
AND MOTION TO CONSOLIDATE FOR
TRIALS ALL CASES OF PLAINTIFFS
WHO WORKED SIMULTANEOUSLY IN
THE SAME WORKPLACES**

*[Concurrently filed herewith are the
following: Memorandum of Points and
Authorities, Declaration of Raphael Metzger,
and [Proposed] Order Granting Motion]*

DATE: May 8, 2026
TIME: 10:00 a.m.
DEPT: SS-6

PLAINTIFFS' NOTICE OF MOTION AND MOTION TO CONSOLIDATE FOR TRIALS ALL
CASES OF PLAINTIFFS WHO WORKED SIMULTANEOUSLY IN THE SAME WORKPLACES



The Litigation Landscape



YouTube

Search



Sign in

- Home
- Shorts
- Subscriptions
- You
- History

Sign in to like videos, comment, and subscribe.

Sign in

More

- Shopping
- Music
- Movies & TV
- Show more

More from YouTube

YouTube Premium



From Dust to Verdict

Brayton Purcell LLP

Podcast · 13 episodes · Updated 5 days ago

This podcast is dedicated to the new epidemic of accelerated silicosis in artificial stone countertop ...more



1 unavailable video is hidden



Latest

1



Episode 12 CalOSHA at the Crossroads

Brayton Purcell LLP · 779 · 2w ago

2



Episode 11 Testimony from Cal OSHA

Brayton Purcell LLP · 174 · 2mo ago

3



Episode 10: Urge Cal-OSHA to adopt V

Brayton Purcell LLP · 234 · 2mo ago

4



Episode 9: 600+ Doctors Petition Cal-OSHA

Brayton Purcell LLP · 133 · 3mo ago



Crystalline Silica AS Is Uniquely Toxic



100s OF PUBLISHED PEER REVIEWED STUDIES AND
NUMEROUS REGULATORY HEALTH FINDINGS

HIGH SILICA CONTENT

PULVERIZED SILICA FLOWER

ULTRA-FINE AND NANO-SIZE,

HIGH SURFACE AREA

TOXIC METALS AND TOXIC RESINS

HUMAN BEINGS CAN ONLY SAFELY FABRICATE IT WEARING A
LEVEL-A HAZMAT SUIT

Hierarchy of Controls

Most effective



Least effective

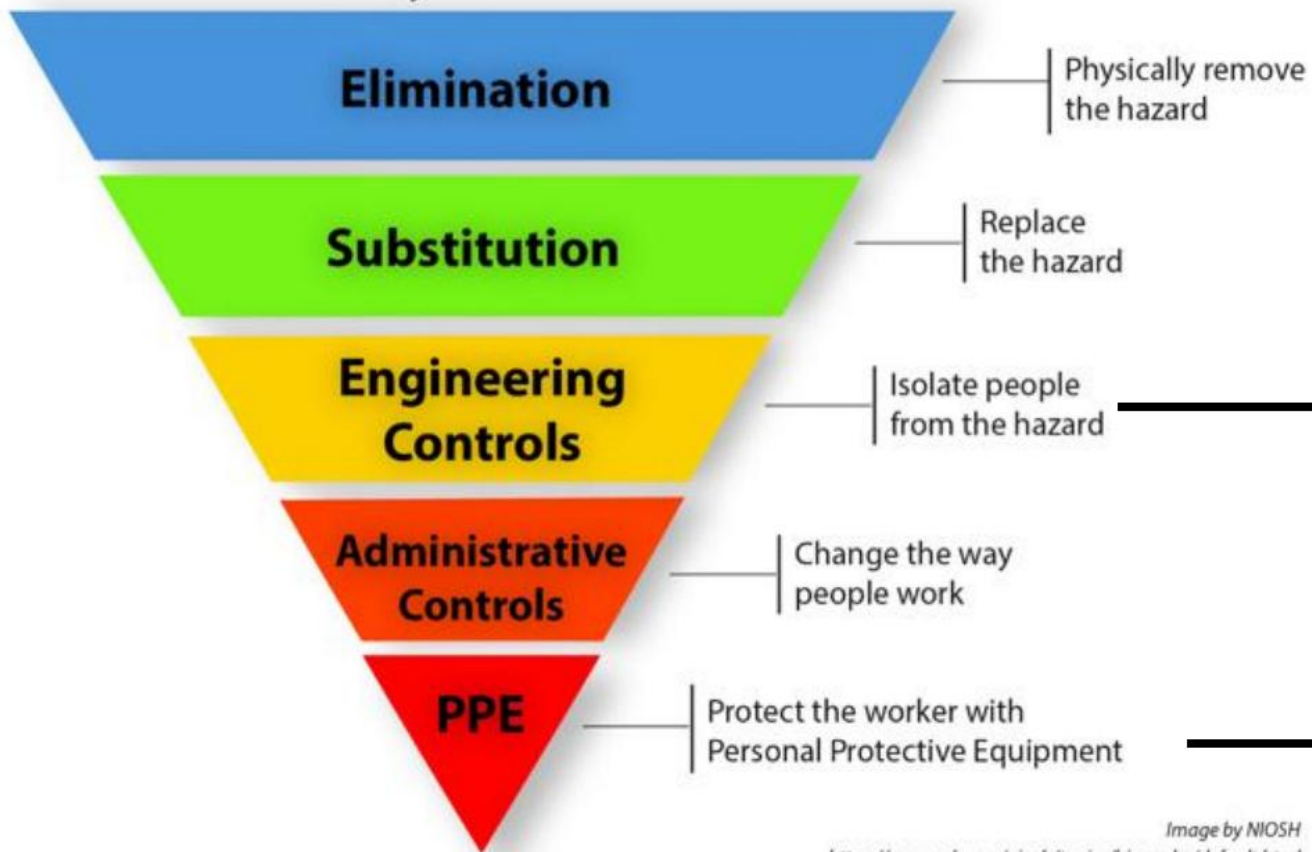
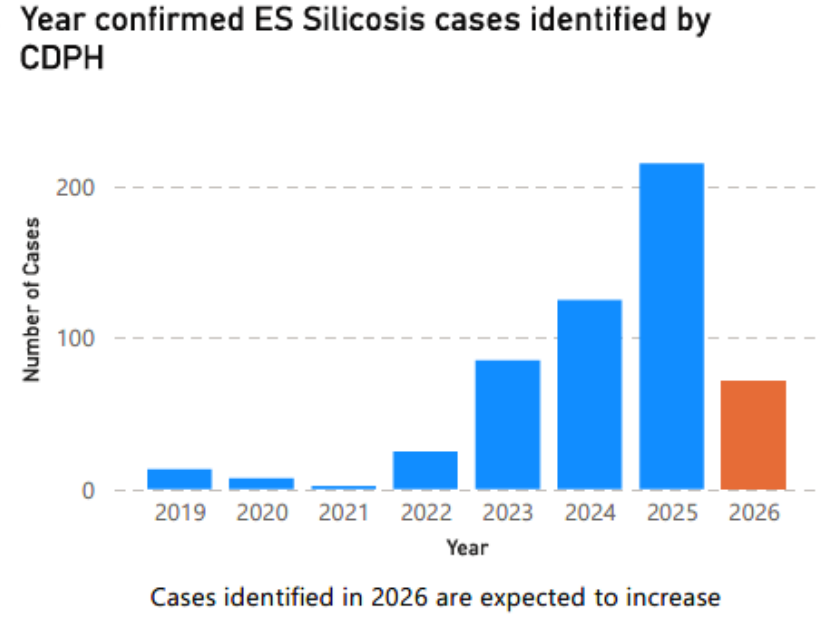
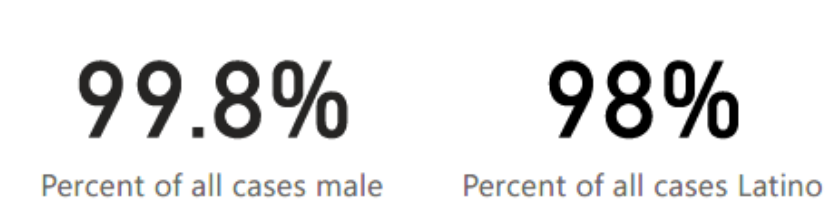
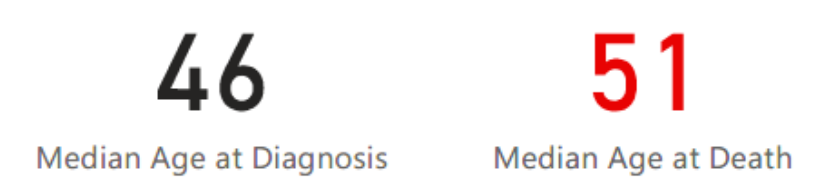


Image by NIOSH
<https://www.cdc.gov/niosh/topics/hierarchy/default.html>

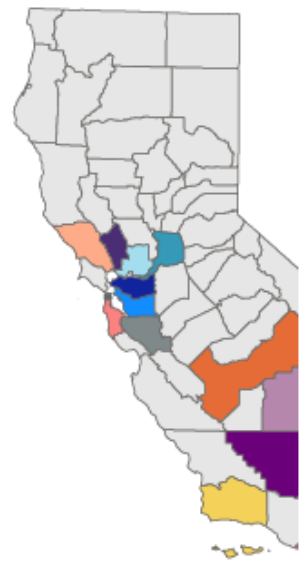
California Engineered Stone (ES) Silicosis Surveillance Dashboard

Date last updated: 4/

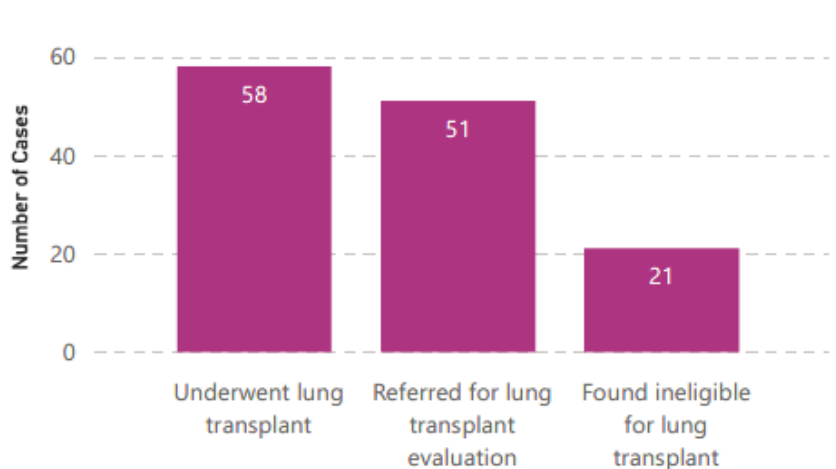


Confirmed ES Silicosis cases have been identified in the following counties:

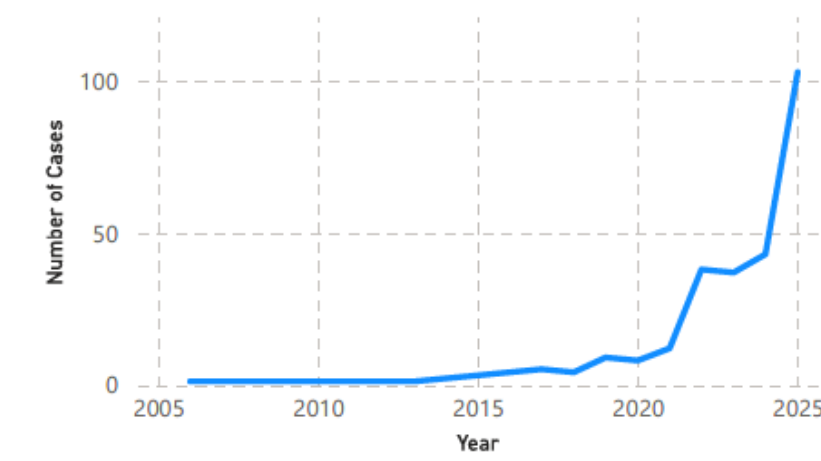
- Alameda
- Contra Costa
- Fresno
- Kern
- Los Angeles
- Napa
- Orange
- Riverside
- Sacramento
- San Bernardino
- San Diego
- San Francisco
- San Mateo
- Santa Barbara



Last known transplant status for confirmed ES Silicosis cases



Year of diagnosis* for confirmed ES Silicosis cases



*Known years of diagnosis are displayed through 2025; data for more recent years are incomplete due to reporting lags. Diagnosis year is missing for some cases.

County of residence

All

County	Count
Alameda	16
Alpine	No known cases
Amador	No known cases
Butte	No known cases



Countertop Fabrication Operations in California

Welcome to the California Countertop Fabrication Operations Dashboard. This dashboard contains information about current countertop fabrication operations statewide and current and past operations where confirmed engineered stone silicosis cases ever worked. **Data on the right and left of the dashboard are from different sources, and the right side is not a subset of the left. They should not be compared or combined.** Data updated quarterly.

[About the Data](#) | [Dashboard Instructions](#) | [Data Collection Methods](#)

Current fabrication operations in California identified by CDPH

1,342

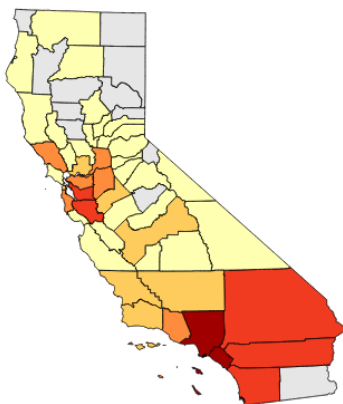
Total number of fabrication operations identified by CDPH

5

Median number of employees per operation identified by CDPH*

* Number of employees per operation is only available for about half of operations

Fabrication operations in California identified by CDPH by county



of operations identified

- No operations identified
- 1-10
- 11-20
- 21-50
- 51-99
- 100+

Work history of confirmed engineered stone (ES) silicosis cases

715

Number of current and past operations where cases** have ever worked

Range: 1 - 15

Number of current and past operations per case

174

Number of current and past operations where >1 case ever worked

Range: 1 - 15

** Work history is only available for 292 cases.



▷ Filed Countertop Fabrication Worker Cases:

-CDPH: 543

-Brayton Purcell LLP 433 California (121 shared with MLG)

36 Post Transplant

2 Ineligible for Transplant

13 Pre Transplant

129 Complicated

134 Simple

79 Lymph

+ Lung Cancer, Rheumatoid Arthritis, Sarcoidosis,
Chronic Kidney Disease





- ▷ Filed Countertop Fabrication Worker Cases:
 - Waters & Kraus –

 - Metzger Law Group/Waters & Kraus – 67 California
 - - 35 Complicated
 - - 31 Simple

 - Cooney & Conway – Chicago – 3

 - Simon Greenstone Panatier – 1 Texas, 1 Nevada, 1 Arizona



▷ Filed Countertop Fabrication Worker Cases:

- Brayton Purcell Non-California: 17
- 5 Oregon
- 4 Washington
- 3 Nevada
- 2 Kentucky
- 1 Colorado
- 1 Florida
- 1 Utah



▶ Pending Countertop Fabrication

Worker Cases:

- Brayton Purcell LLP: 250 in 14 States
- -W&K/MLG-W&K -

BP California HRCT



- ▶ 449 AS Fabrication Workers Sent for HRCT
- ▶ 366 Positive
- ▶ 83 Negative
- ▶ 81% Prevalence Rate

BP Nationally HRCT



- ▶ 528 AS Fabrication Workers Sent for HRCT
- ▶ 406 Positive
- ▶ 122 Negative
- ▶ 77% Prevalence Rate

BP Nationally HRCT



- ▷ 28% Complicated
- ▷ 42% Simple
- ▷ 30% Lymph



Photo: Jane Fazio



Photo: Jane Fazio of Medic



F





“Sophisticated Shops”

- 45 ISFA and/or
NSI Member Shops
With Workers with
Silicosis in 8 States

Defendants

- ▷ 500 Unique Defendants
- ▷ Average in Each Case: 45
- ▷ Highest in a Case: 100
- ▷ The same 10 defendants are in most cases.





PERRIN
CONFERENCES

ARTIFICIAL STONE SILICOSIS LITIGATION CONFERENCE



JW Marriott Los Angeles | April 28, 2026

STATUS OF THE ARTIFICIAL STONE LITIGATION IN CALIFORNIA



Geoff Davis, Esq.
CMBG3
Pasadena, CA



Camille Hunt, Esq.
Waters Kraus Paul & Siegel
Los Angeles, CA



James Nevin, Esq.
Brayton Purcell LLP
San Francisco, CA



Jana M. Simmons, Esq.
Ropers Majeski
Los Angeles, CA