

AI in Construction

Moderator



Cheri Hanes, CRIS, LEED AP
Vice President
Head of Construction
Innovation and Sustainability
AXA XL
Dallas, TX



Ben Ferrer
National Director of VDC
Turner Construction Company
New York, NY



Erin Khan
Founder, Sr. Consultant
Erin Khan Consulting
Los Angeles, CA



Jackeline S. Rodriguez, Esq.
Hamilton, Miller &
Birthisel, LLP
Miami, FL



Hamzah Shanbari
Director of Innovation
The Haskell Company
Jacksonville, FL



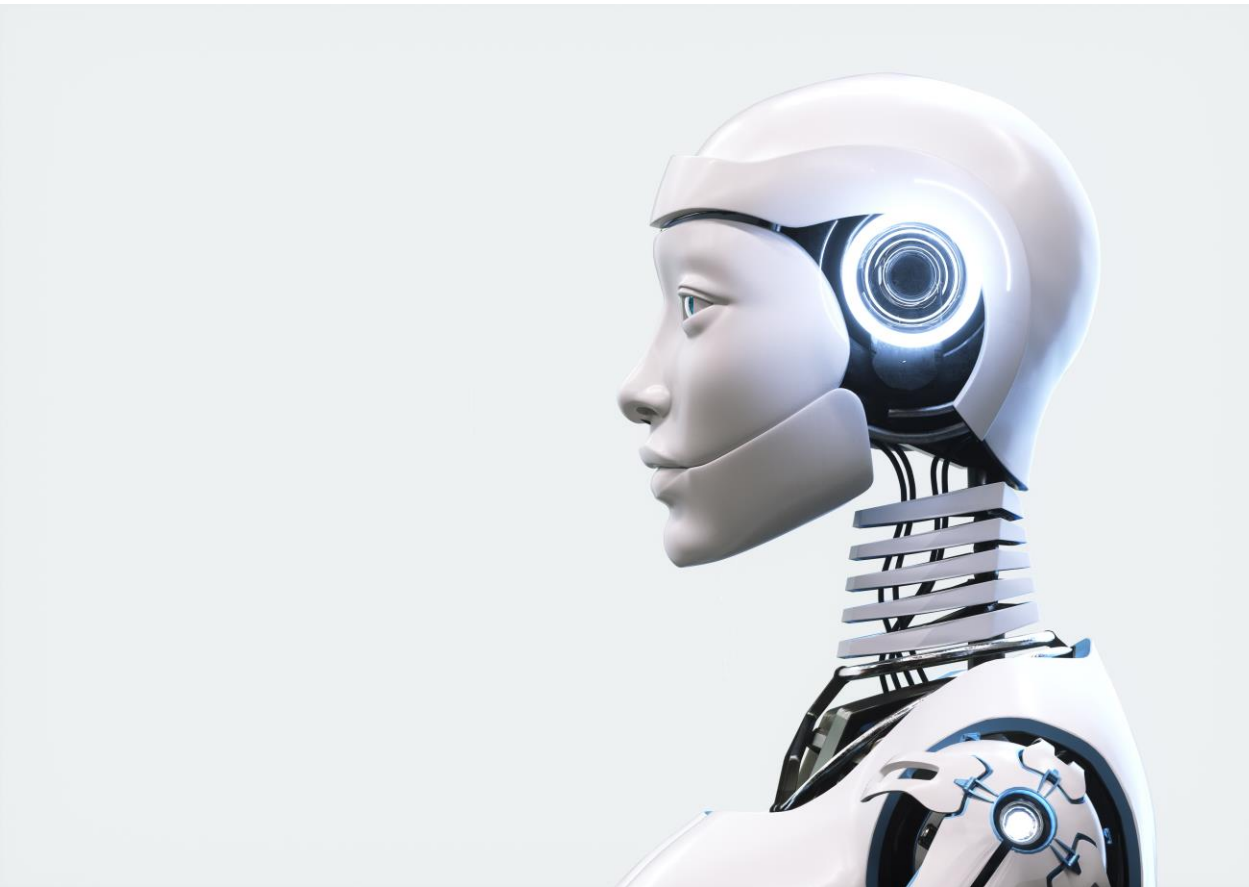
AI in CONSTRUCTION

January 2024

AI in Construction

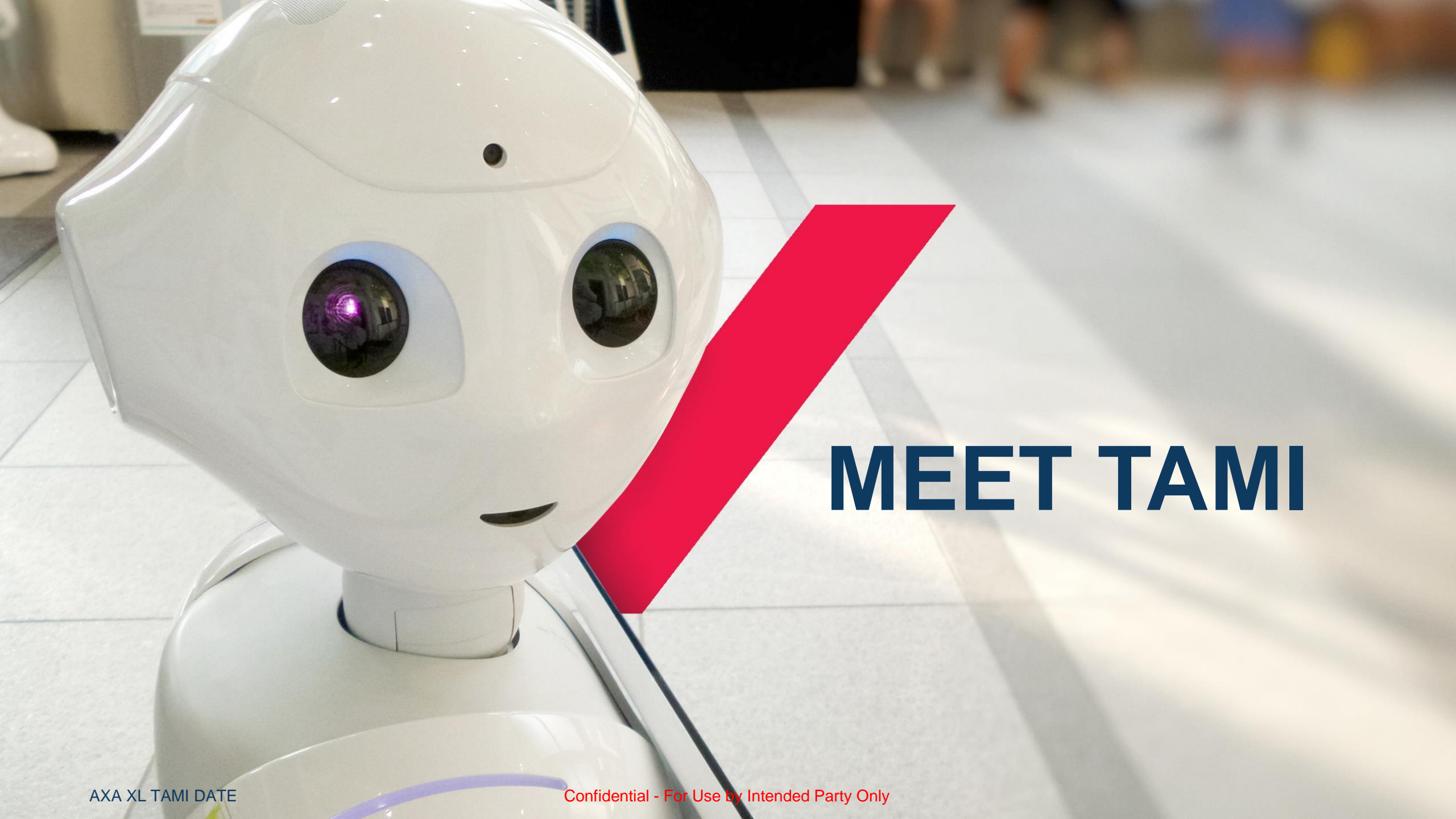


Brave New World, or Old Hat?



AI in Construction



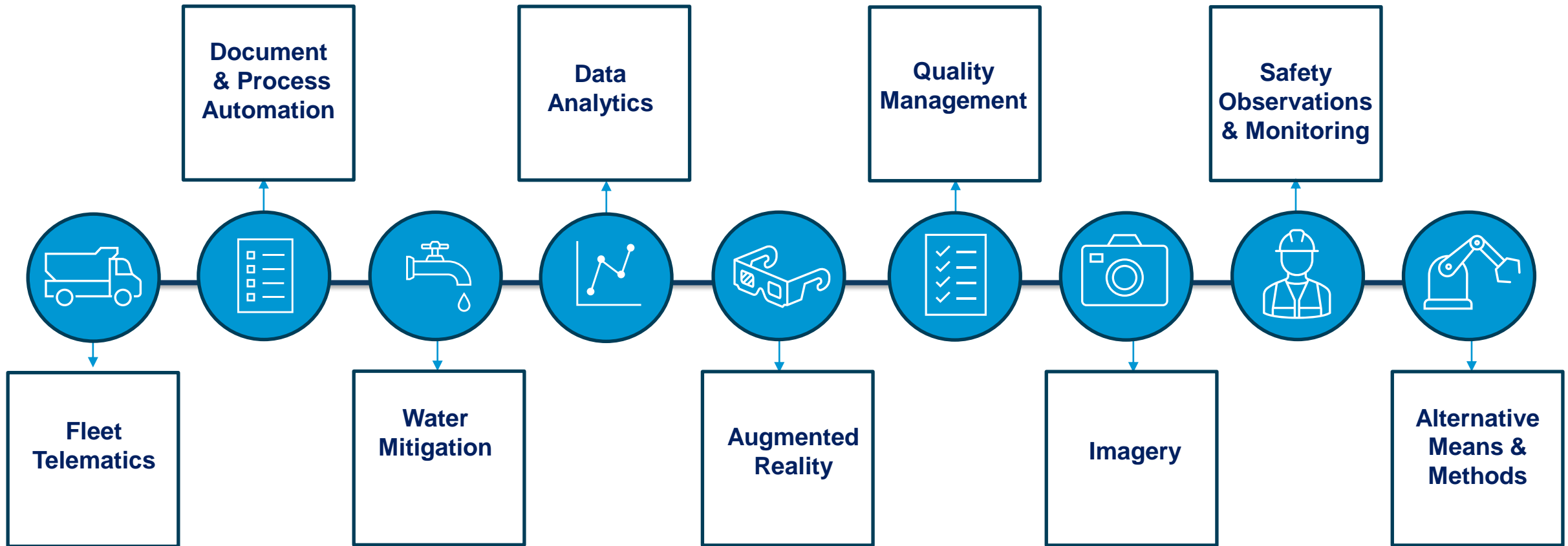


MEET TAMI

AI in Construction

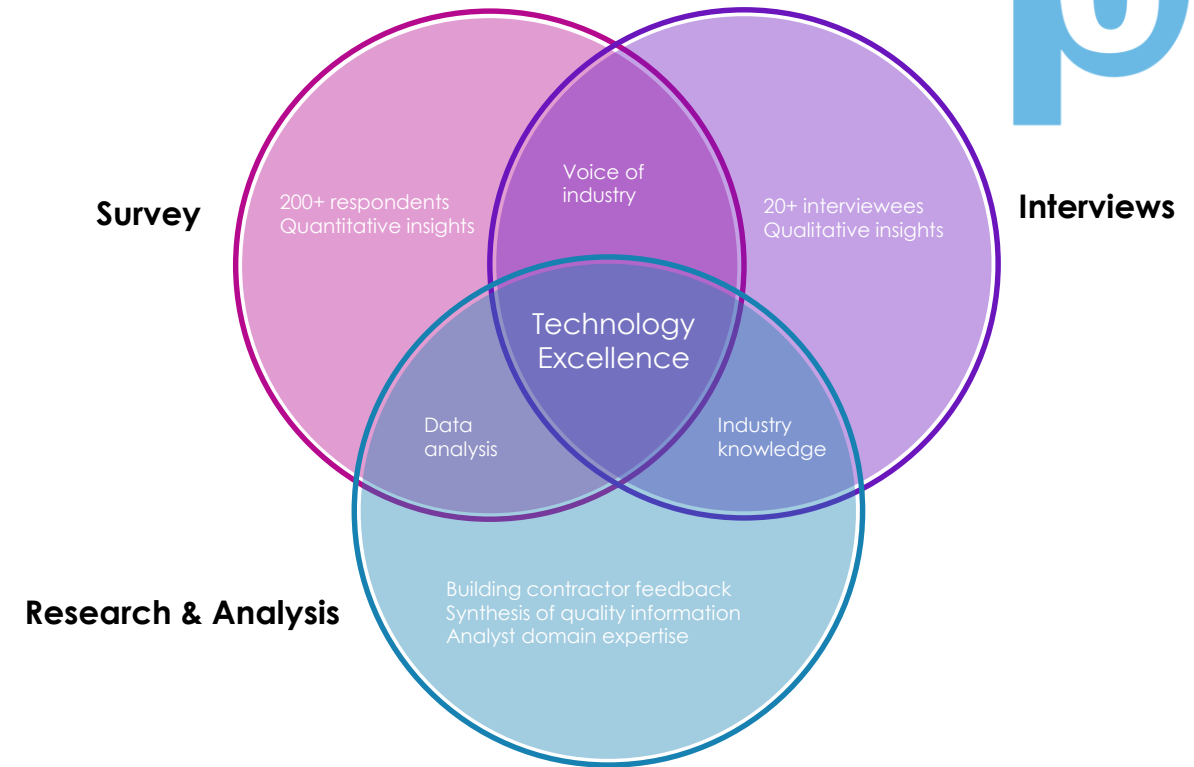
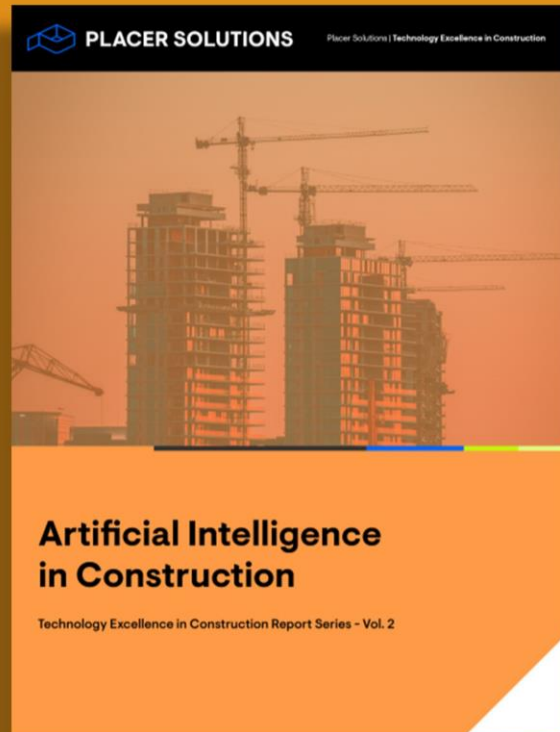


Where do we find AI in Construction?



Read the full report —>

www.placersolutions.io/research-and-reports



Specifications

- Format: PDF
- Number of pages: 46
- Word count: 8500

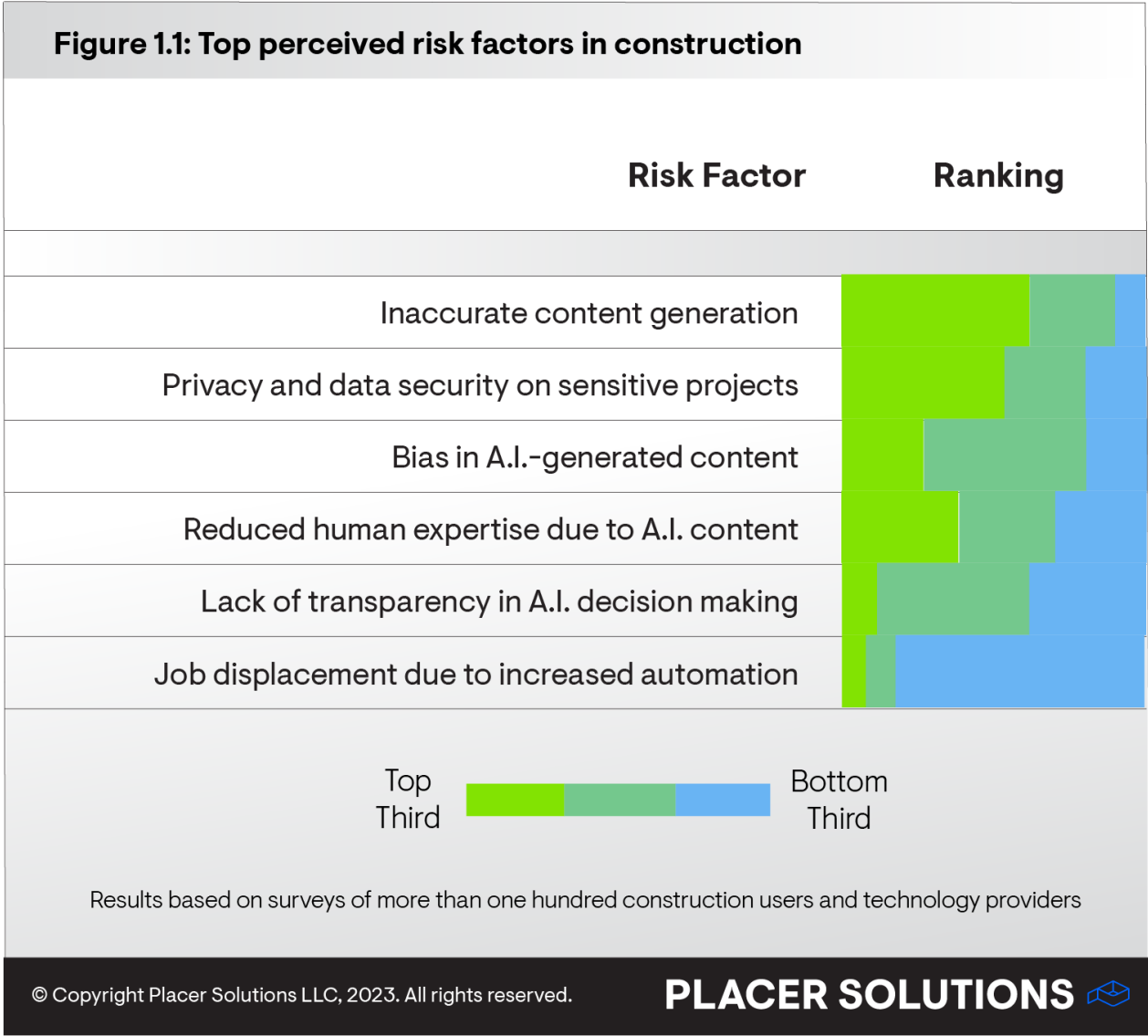
Themes Explored

- Introduction to Technology
- Value Chain Analysis
- Builder Use Cases
- Outlook & Opportunities
- Best Practices for Adoption



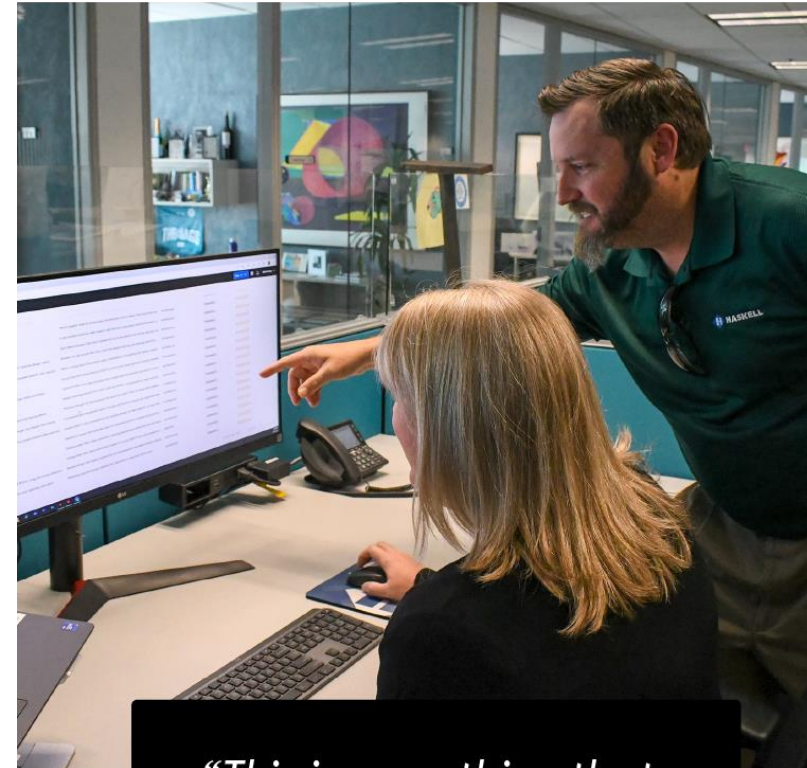
What Are the Risks?

Like any potent technology, A.I. comes with its own risks, including cybersecurity threats and potential inaccuracies in output. It’s vital to acknowledge and prepare for these challenges.



Measured A.I. Policy

Haskell implemented a robust policy that emphasizes information security and public awareness, coupled with educational measures for employees. Parallel to policy updates, Haskell is fostering innovation by encouraging A.I. exploration in engineering design and establishing an A.I. Coordination Group for strategic discussions on A.I. implementation across departments.



“This is something that is not going to go away. It is big enough that we need to pay attention to it.”

— Mark Trednick, Haskell CIO

AI in Construction

Moderator



Cheri Hanes, CRIS, LEED AP
Vice President
Head of Construction
Innovation and Sustainability
AXA XL
Dallas, TX



Ben Ferrer
National Director of VDC
Turner Construction Company
New York, NY



Erin Khan
Founder, Sr. Consultant
Erin Khan Consulting
Los Angeles, CA



Jackeline S. Rodriguez, Esq.
Hamilton, Miller &
Birthisel, LLP
Miami, FL



Hamzah Shanbari
Director of Innovation
The Haskell Company
Jacksonville, FL

Best Practices for Construction

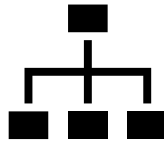
The construction industry is exploring the potential of text-based A.I. like GPT-4, but adoption requires careful planning at individual, organizational, and industry levels. Early preparation and responsible governance are key to leveraging A.I. as a strategic advantage in construction.



Individual

Think of text-based A.I. as a **tool that augments human expertise**, not replaces it. While text-based A.I. can automate mundane tasks, the output still requires **human validation**.

Knowledge workers → “knowledgeable” workers



Firm

Outline clear protocols for acceptable use, and keep your team updated through **educational initiatives**. Investing in expert support to set up secure, customized **internal applications** can be a game-changer.

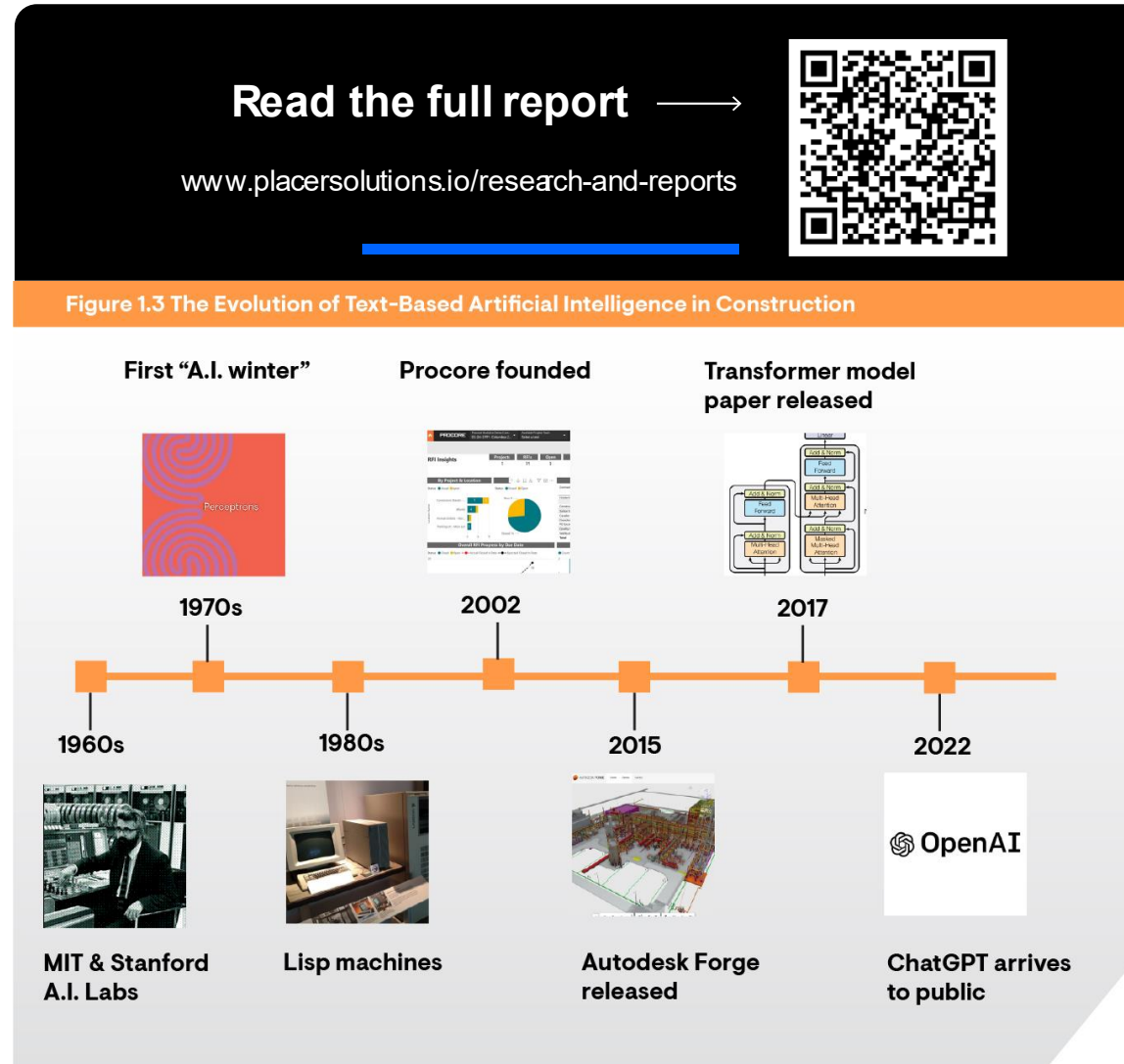


Industry

Sharing key insights and practices can fast-track the industry's digital transformation. Moreover, text-based A.I. has the capacity to be a catalyst for **workforce development**.



Thank you!





THANK YOU



Cheri.Hanes@axaxl.com



www.AXAXL.com