



# NATIONAL CONSTRUCTION DEFECT CONFERENCE



The Roosevelt New Orleans | November 13-14-2025

## Utilization of Artificial Intelligence in Construction Defect Litigation



**Paul Balentine, CPCU**  
*Associate Vice President –  
Specialty Casualty Claims,  
Nationwide, Scottsdale, AZ*



**Abigail Horvat, Esq.**  
*Cozen O'Connor  
Chicago, IL*



**Terence Kadlec, P.E.**  
*Senior Vice President –  
Technical Services, MC  
Consultants, Inc., Denver, CO*



**Steve Lokus**  
*Vice President, Casualty  
Construction Claims  
Sompo, Irvine, CA*

# Utilization of Artificial Intelligence in Construction Defect Litigation



Perrin National Construction Defect Conference  
November 13, 2025

©2025 Perrin Conferences LLC. All rights reserved.

The views are shared for educational purposes only and provided for use only in connection with this conference.

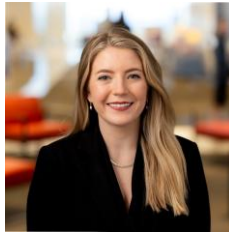


# Introductions - Differing Perspectives



**Paul Balentine, CPCU**

Associate Vice President – Specialty Casualty Claims  
Nationwide, Scottsdale, AZ



**Abigail C. Kanavos, Esq. (formerly Abigail C. Horvat)**

Associate Attorney  
Cozen O'Connor, Chicago, IL



**Terence Kadlec, P.E.**

Senior Vice President – Technical Services  
MC Consultants, Inc., Denver, CO



**Steve Lokus**

Vice President, Casualty Construction Claims  
Sompo, Irvine, CA



# Session Goals

- Brief AI 101
- New issues and current application of AI
- Attracting associates and new graduates with AI and tech advancements
- Expectations and generational differences
- Generative AI demonstration & open forum



# Terminology & Definitions

## *The Basics*

- **Artificial Intelligence (AI):** The simulation of human intelligence in machines that are programmed to think and learn.
- **Machine Learning (ML):** A subset of AI that involves training algorithms to learn from and make predictions based on data.
- **Large Language Model (LLM):** An advanced AI system trained on vast amounts of text to understand, generate, and manipulate human language through statistical pattern recognition.
- **Generative AI:** AI that can create new content, such as text, images, or music, based on learned patterns.
- **Bias:** Systematic errors in AI models that can lead to unfair outcomes.
- **Chatbot:** A reactive tool that answers questions based on its training model - it doesn't think.

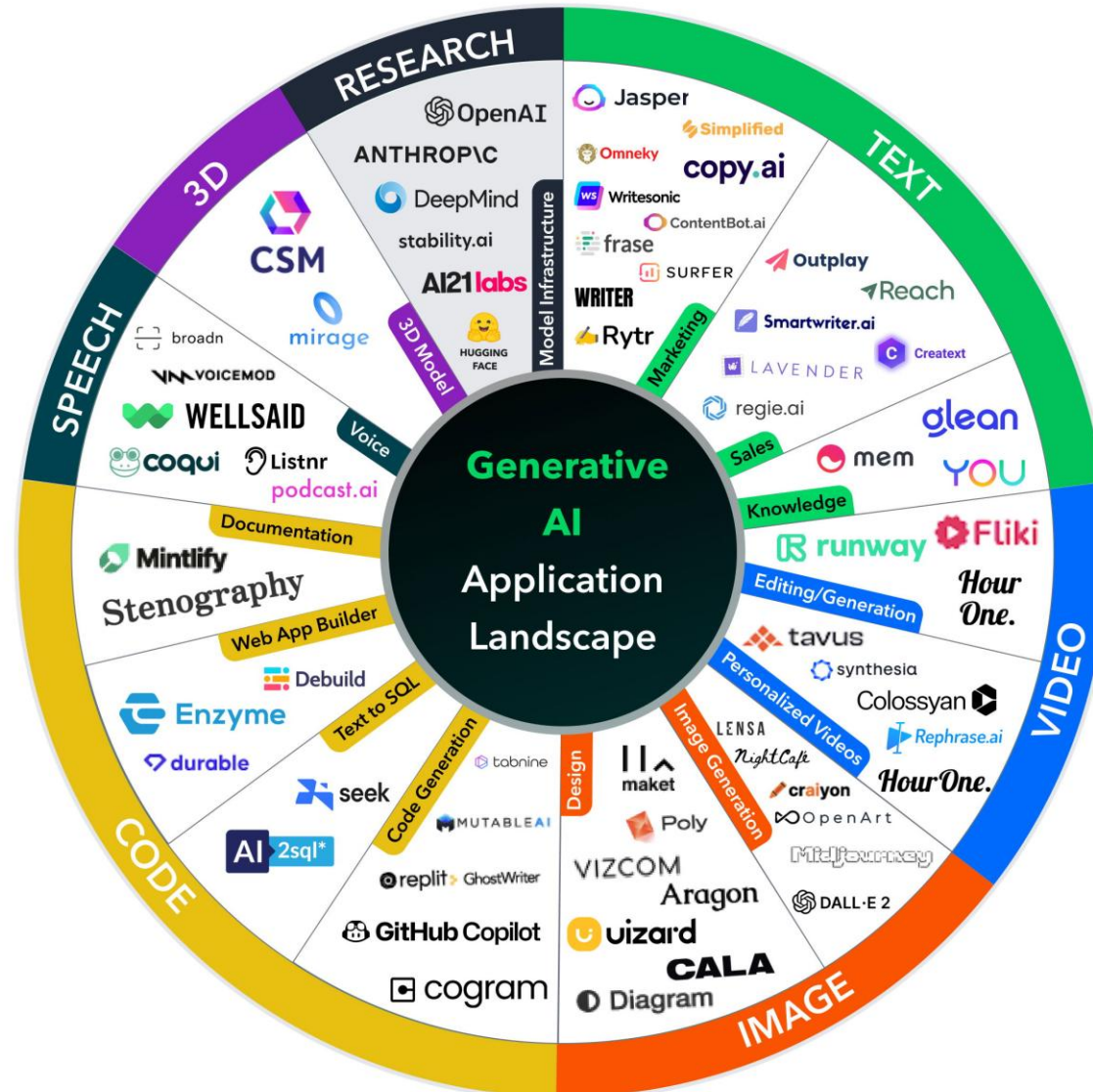


# Terminology & Definitions

## *Hallucination v. Omission v. Error*

- **Hallucination:** When an LLM generates confident, plausible-sounding, but entirely false or nonsensical information; akin to the AI “making things up”.
- **Omission:** When an LLM fails to provide certain details or skips relevant information in its responses, even if that information was available in the provided context.
- **Error:** An output that is factually incorrect/flawed, but the intention was to provide accurate information based on the input. Unlike a hallucination, an error is typically a miscalculation or a failure to apply rules correctly

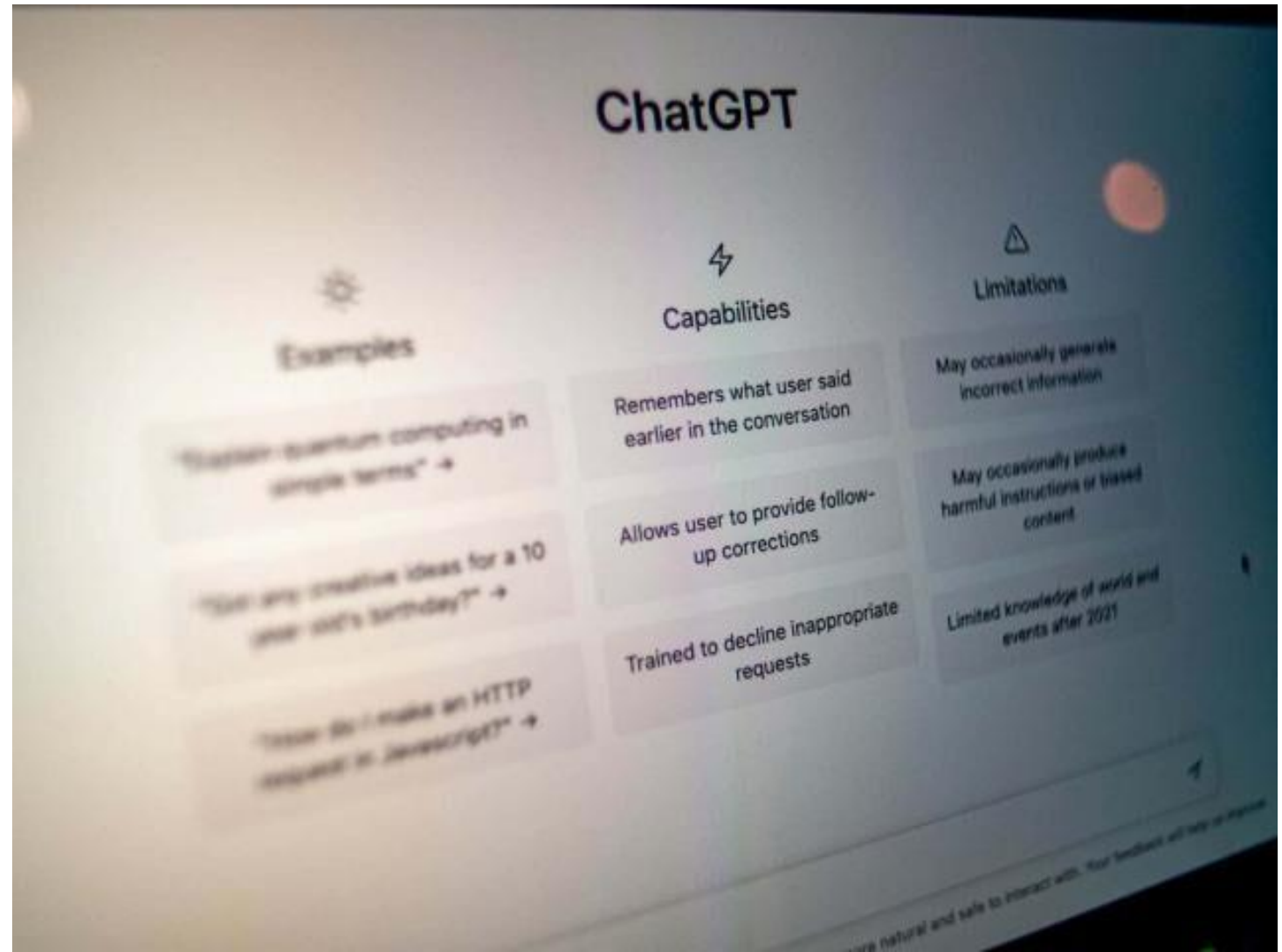
# Current AI Uses, Platforms, and More...





# Current AI Uses, Platforms, and More...

Let's get some input from ChatGPT...



# Legal Tech Trends 2025



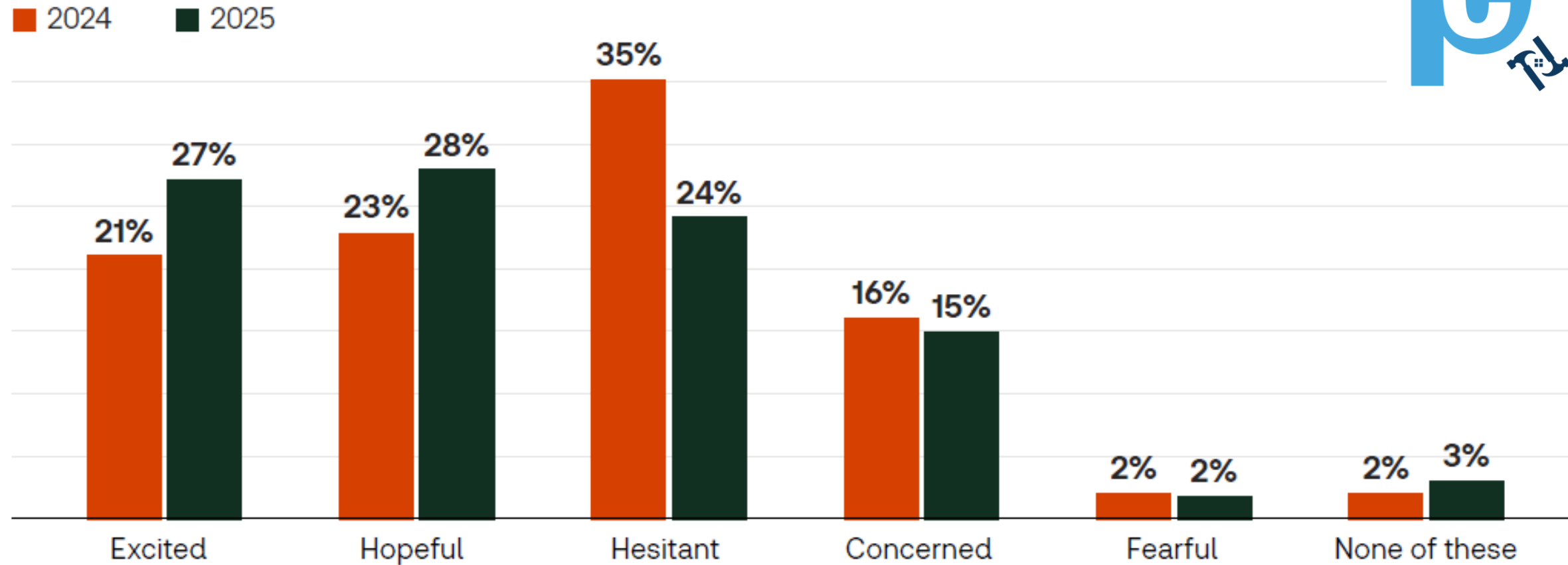
Successful legal tech adoption is 80% organizational and 20% technological.

What if a human is no longer needed for a task, or at least not to undertake the laboring oar of a routine task?

Nobody wants to waste time jumping from one window to another, running multiple tools over the same document. If there is an opportunity to simplify, firms are likely to take it.

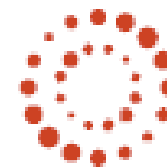
Firms are discovering that their internal data, when properly structured, become competitive moats in the AI era.

# Sentiment on the future of GenAI



Source: Thomson Reuters 2025

2025 Generative AI in Professional Services Report

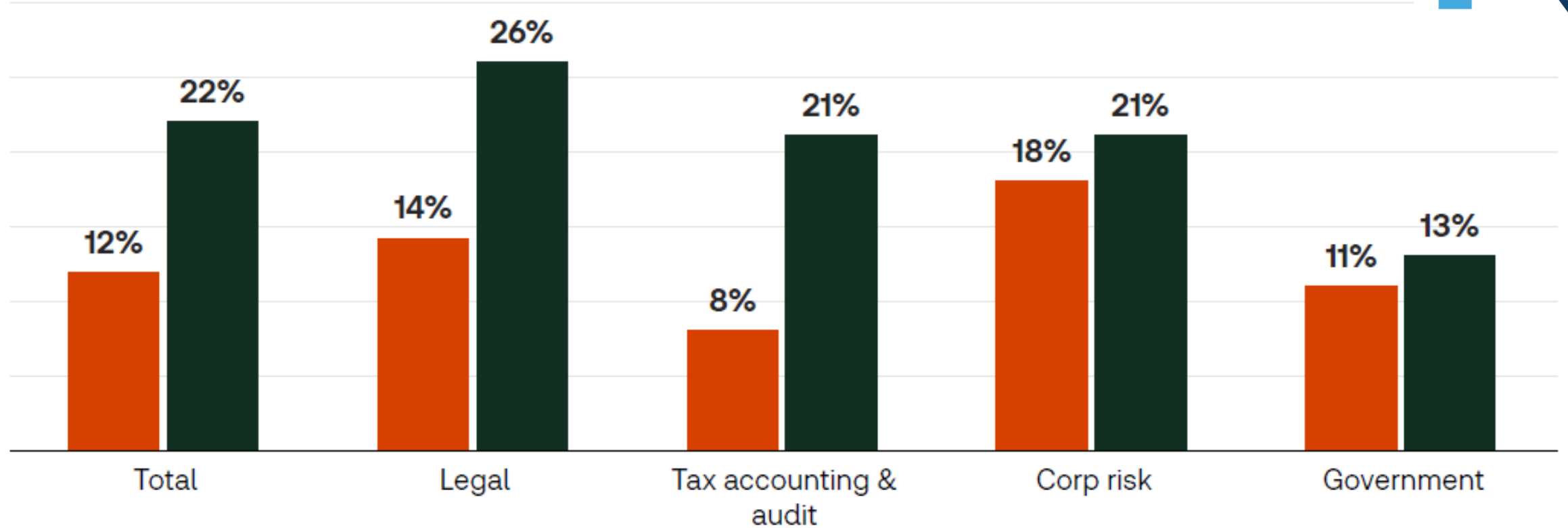


Thomson Reuters  
Institute

# Already using GenAI technology, year-over-year

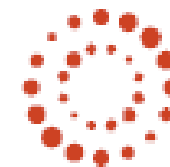


■ 2024 ■ 2025



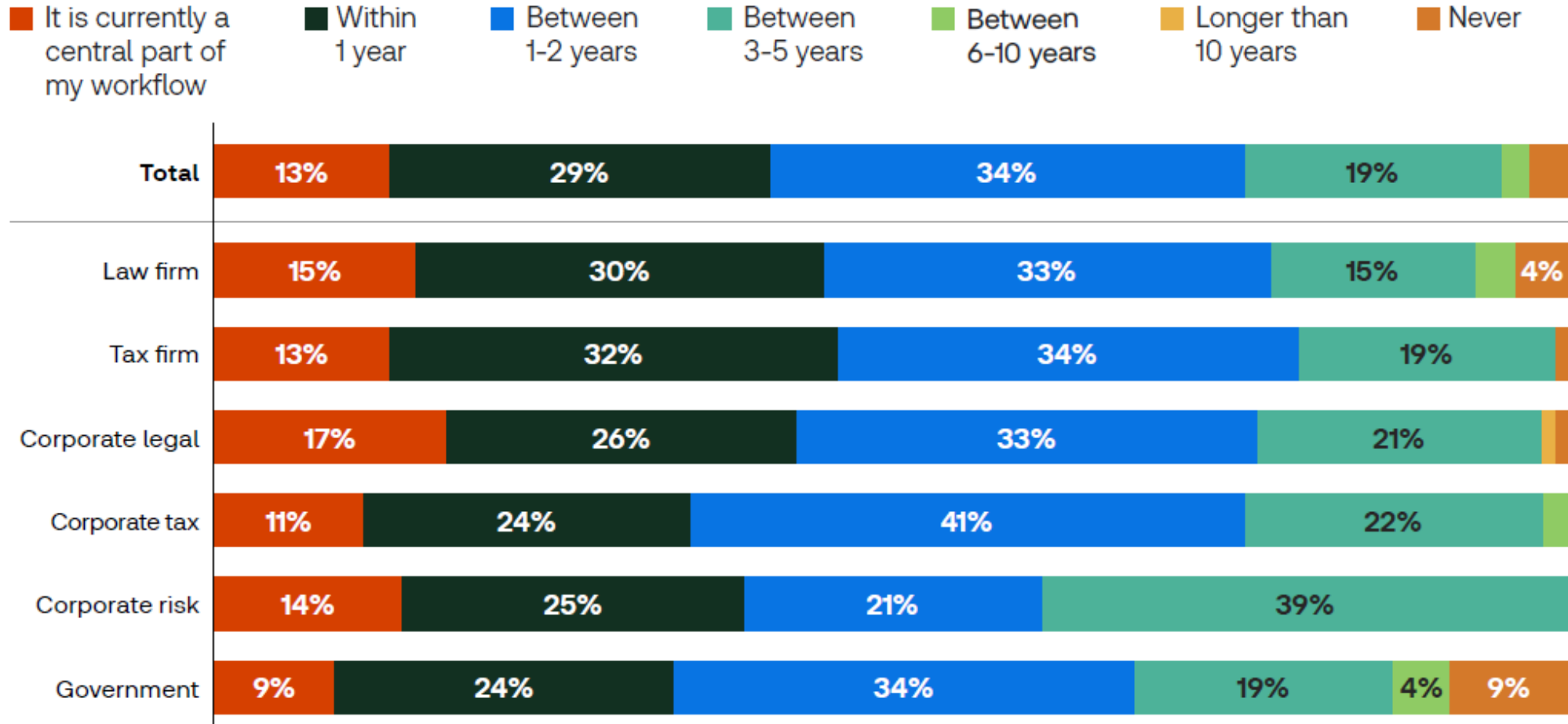
Source: Thomson Reuters 2025

2025 Generative AI in  
Professional Services Report



Thomson Reuters  
Institute

# When will GenAI be a central part of your organization's workflow?

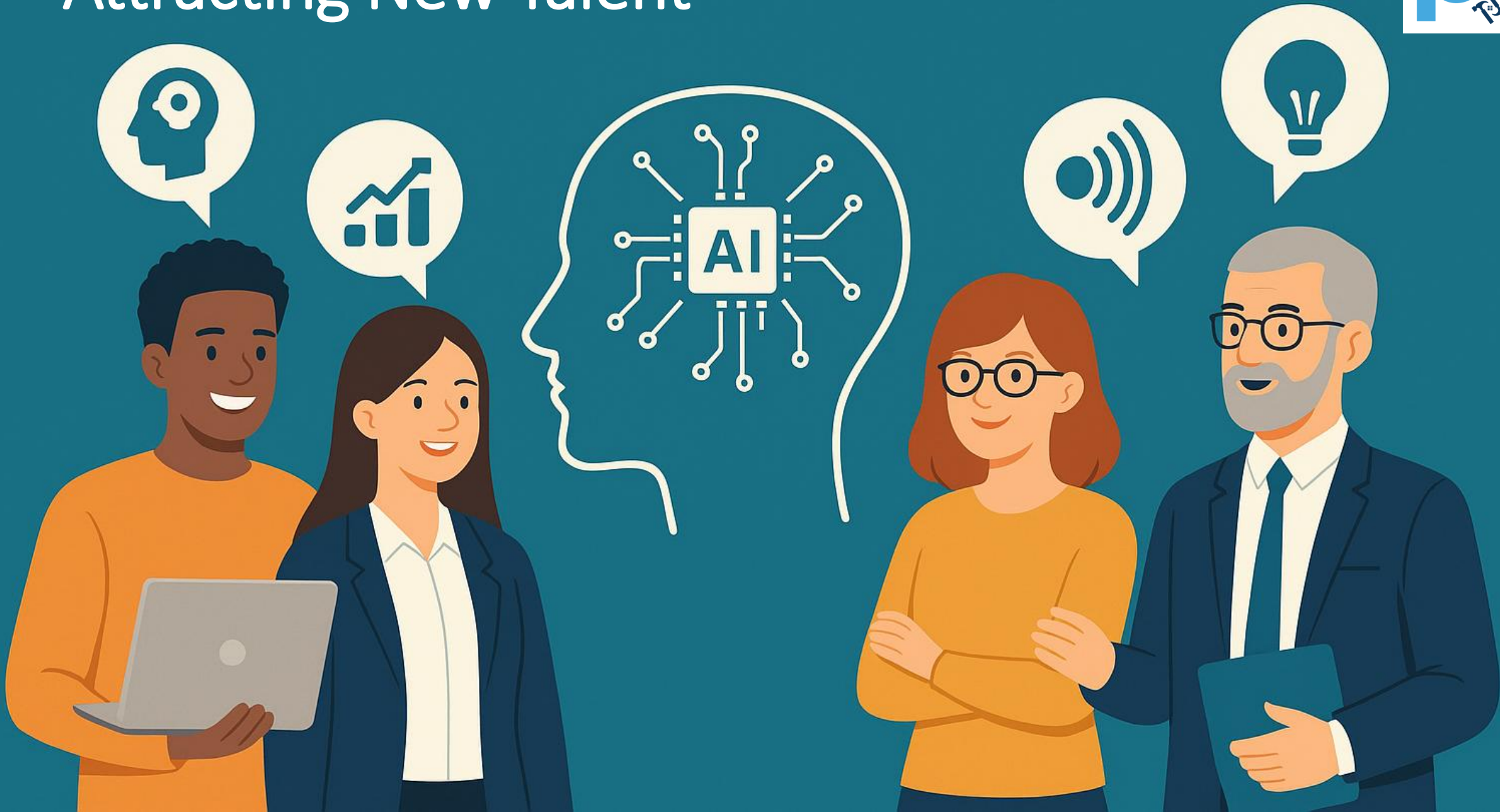


Source: Thomson Reuters 2025

## 2025 Generative AI in Professional Services Report



# Attracting New Talent





**Boomer**



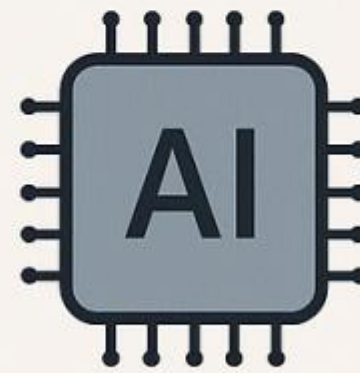
**Gen X**



**Millennial**



**Gen Z**



**Gen Alpha**



---

Generational Differences & AI

# Best Practices Using AI

- Have a Policy
- Engagement & Training
- Know About the Data
- Consider Vendors/Partnerships
- Beta Groups



# ABA Guidance – Formal Opinion 512 (July 2024)



“[L]awyers using generative artificial intelligence tools must fully consider their applicable ethical obligations, including their duties to provide competent legal representation, to protect client information, to communicate with clients, to supervise their employees and agents, to advance only meritorious claims and contentions, to ensure candor toward the tribunal, and to charge reasonable fees.”



# State Bar Guidance

- California – Practical Guidance for Use of Gen. AI (Nov 2023)
- Florida – Ethics Opinion 24-1 (Jan 2024)
- New Jersey – Preliminary Guidelines for Use of AI (Jan 2024)
- New York – Report & Recommendations of AI Task Force (April 2024)
- Pennsylvania – Opinion 2024-200 (May 2024)

# Utilizing AI in Claims Demonstration

